

OCTOBER 2, 2023

# NEWSLETTER



## NEXT GROUP CONNECT

Just a reminder that the next Group Connect is on Tuesday, October 10th. Space is limited, so **you will need to sign up to attend this one** at: <https://www.signupgenius.com/go/10C0E4BA4AD29A6F8C07-group1>.

## INCLUSIVITY PRINCIPLES

Missouri State University's Office of Inclusive Engagement has released the University's newly minted Inclusivity Principles. These principles were established as a mechanism to solidify and demonstrate the University's commitment to inclusion and belonging. You can find these at: <https://www.missouristate.edu/InclusiveEngagement/inclusivity-principles.htm>.



### MULTICULTURAL SERVICES GRADUATION RECEPTION

Seniors who are graduating this December can register to participate in the Multicultural Services Graduation Reception on Thursday, Dec. 7th at 6:00pm in the Plaster Student Union - Union Club on the 4th Floor. To register, go to: [bit.ly/MSGRFA23](https://bit.ly/MSGRFA23)



# This week

---

M  
02

No activities scheduled. Go to the IES Blackboard "Events" folder to find other possible events.

---

TU  
03

**EVENT:** Tuesday Talk  
MRC  
1:00 PM - 3:00 PM

---

W  
04

**EVENT:** Latino/a/x Student Org Dispels Stereotypes  
MRC  
3:00 PM - 4:00 PM

---

TH  
05

No activities scheduled. Go to the IES Blackboard "Events" folder to find other possible events.

---

F  
06

No activities scheduled. Go to the IES Blackboard "Events" folder to find other possible events.

---

SA  
07

No activities scheduled. Go to the IES Blackboard "Events" folder to find other possible events.

---

SU  
08

No activities scheduled. Go to the IES Blackboard "Events" folder to find other possible events.

**EVERYONE**  
*is welcome here!*

# OCTOBER EVENTS



**Missouri  
State.**

OFFICE of  
MULTICULTURAL  
PROGRAMS

LGBTQ+  
STUDENT SERVICES

## **TUESDAY TALK 1-3PM MRC**

**3**

Join our Grad Assistant to talk about heritage months, resources, careers, & more! All students welcome.

## **VOTING AWARENESS**

**2-3:30PM MRC**

**17**

Learn all about voting and advocacy from PROMO (Missouri's statewide organization advocating for LGBTQ equality) & Paws to the Polls.

## **LATINO/A/X STUDENT ORG DISPELS STEREOTYPES 3-4PM MRC**

**4**

Latino/a/x student org. will discuss common Latino/a/x stereotypes. Free cookies/desserts! We are waiting for you all!

## **INCLUSIVE SEX ED W/APO**

**3:30-4:30PM MRC**

**18**

Hear about sexual health from APO (AIDS Project of the Ozarks) & ask any (yes, any) questions you have. Inclusive of all bodies/identities.

## **MOVIE NIGHT 6-8PM PSU THEATRE**

**9**

Sponsored by SAC & the MRC. Join us all for the powerful queer film "Moonlight" & free food! Faculty & Staff welcome to join.

## **PRIDE FAIR 2-4PM PSU BALLROOM**

**27**

Learn about LGBTQ+ organizations, being an ally, enjoy food & meet new people! We are excited to see you all. Faculty & Staff welcome to join

## **CHATEA TIME 2-4PM MRC**

**11**

Travel the world by tasting teas from many countries! Pop into the MRC for some tea & snacks, & to get to know the MRC staff.

## **INTERNATIONAL QUEER**

**PANEL 2:30-4PM MRC**

**30**

Hear from international peers about their experiences in the U.S. as queer individuals. Open to all students.

To individuals who need special services, assistance, or appropriate modifications to fully participate in these events, please indicate by contacting the Office of Multicultural Programs at [multiculturalprograms@missouristate.edu](mailto:multiculturalprograms@missouristate.edu). Please notify us 1-2 weeks prior to the events.



# FOOD SUSTAINABILITY AWARENESS WEEK

**GUEST SPEAKER 5:30-6:30**

**OCT  
2**

**PSU BALLROOM EAST**  
**"TRADITION FOR NUTRITION: A FOCUS  
ON INDIGENOUS FOOD IN NORTH  
AMERICA"**  
**DR. MARY WILLIS**



**PLASTIC BAG SWAP 11-2**

**PSU (IN FRONT OF BEAR NECESSITIES)**

**5 BAGS FOR A STICKER!  
10 BAGS FOR A TOTE BAG!**

**OCT  
3**

**STREET CLEANUP 6:30-7:30**

**OCT  
3**

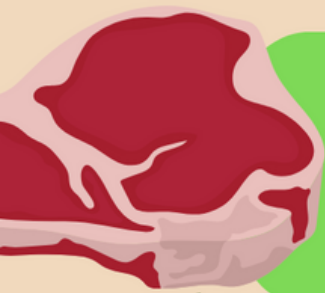
**ELM STREET**  
**COME HELP KEEP CAMPUS CLEAN**  
**EARN SERVICE HOURS!**



**TRIVIA NIGHT 7-9**

**PSU FOOD COURT**  
**FOOD TRIVIA**  
**4 PEOPLE PER TEAM**  
**COMPETE TO WIN HYDROFLASKS!**

**OCT  
4**



# VOLUNTEERS NEEDED

Participants needed for a Word Retrieval Psychology Study!

## Benefits of Participation:

- Students in the Inclusive Excellence Scholarship program can fulfill one Multicultural Service events requirement
- Students enrolled in Introduction to Psychology (PSY-121) can receive two research credits for their grade requirement

## Risks of Participation:

- No physical or emotional risk involved

## Participation in the study involves:

- One survey completion of 5 mins upon registration
- One 30 min in person session in the MRC

## Participants should meet the following criteria:

- Must be 18 to 40 years old
- Racially Identify as either White or Black

Opportunities to participate available weekly throughout the Fall '23 Semester.

**Register at either the following link,  
Sona, or the QR code**

**[https://missouristate.col.qualtrics.com/jfe/form/SV\\_8uMpcxeWRTjTkp0](https://missouristate.col.qualtrics.com/jfe/form/SV_8uMpcxeWRTjTkp0)**

For questions, email

- Mykah Doolin  
mk827@live.missouristate.edu
- Bogdan Kostic  
bkostic@missouristate.edu

