



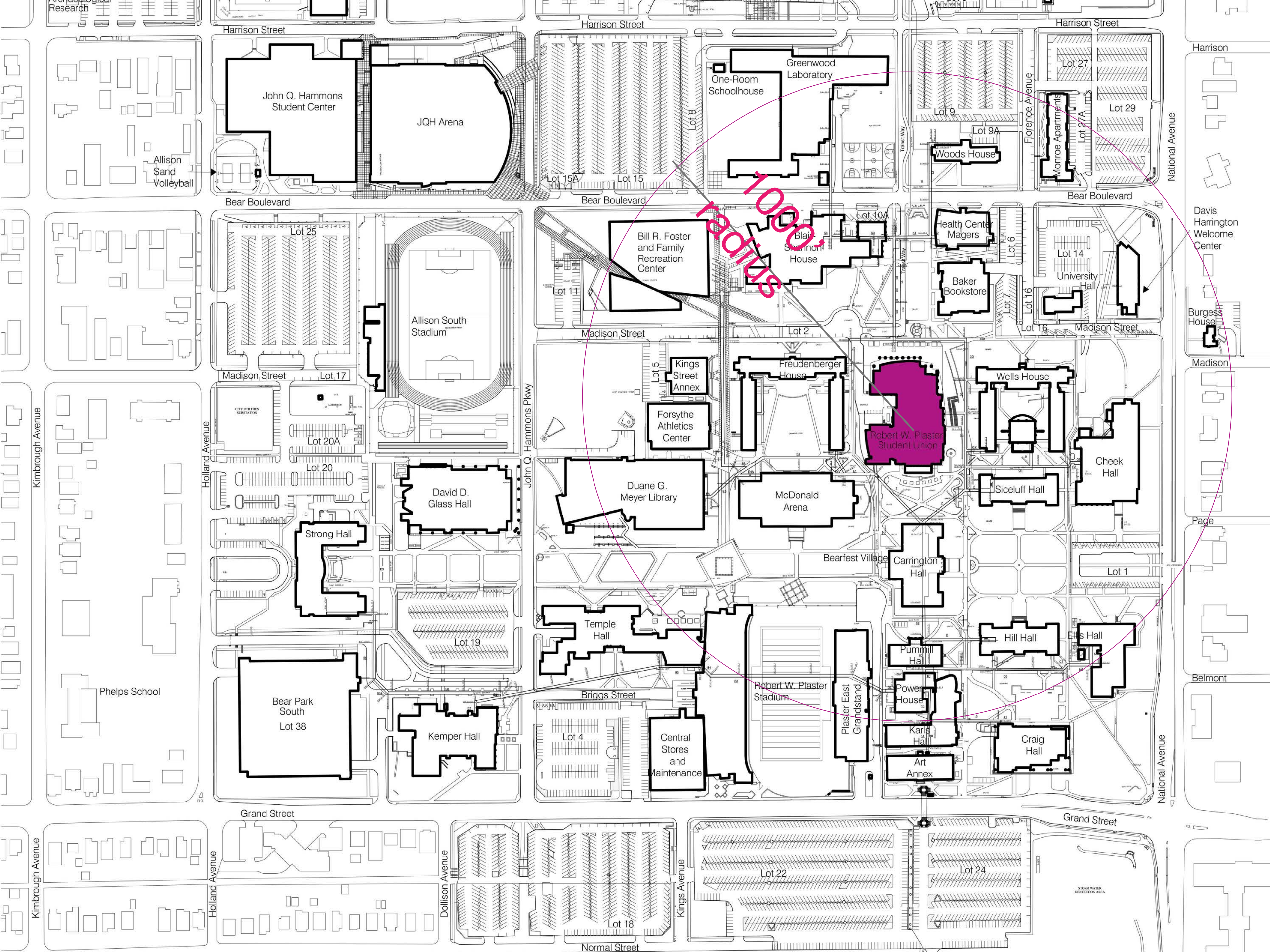
Missouri StateTM
U N I V E R S I T Y

Multicultural Resource Center - September 22, 2020

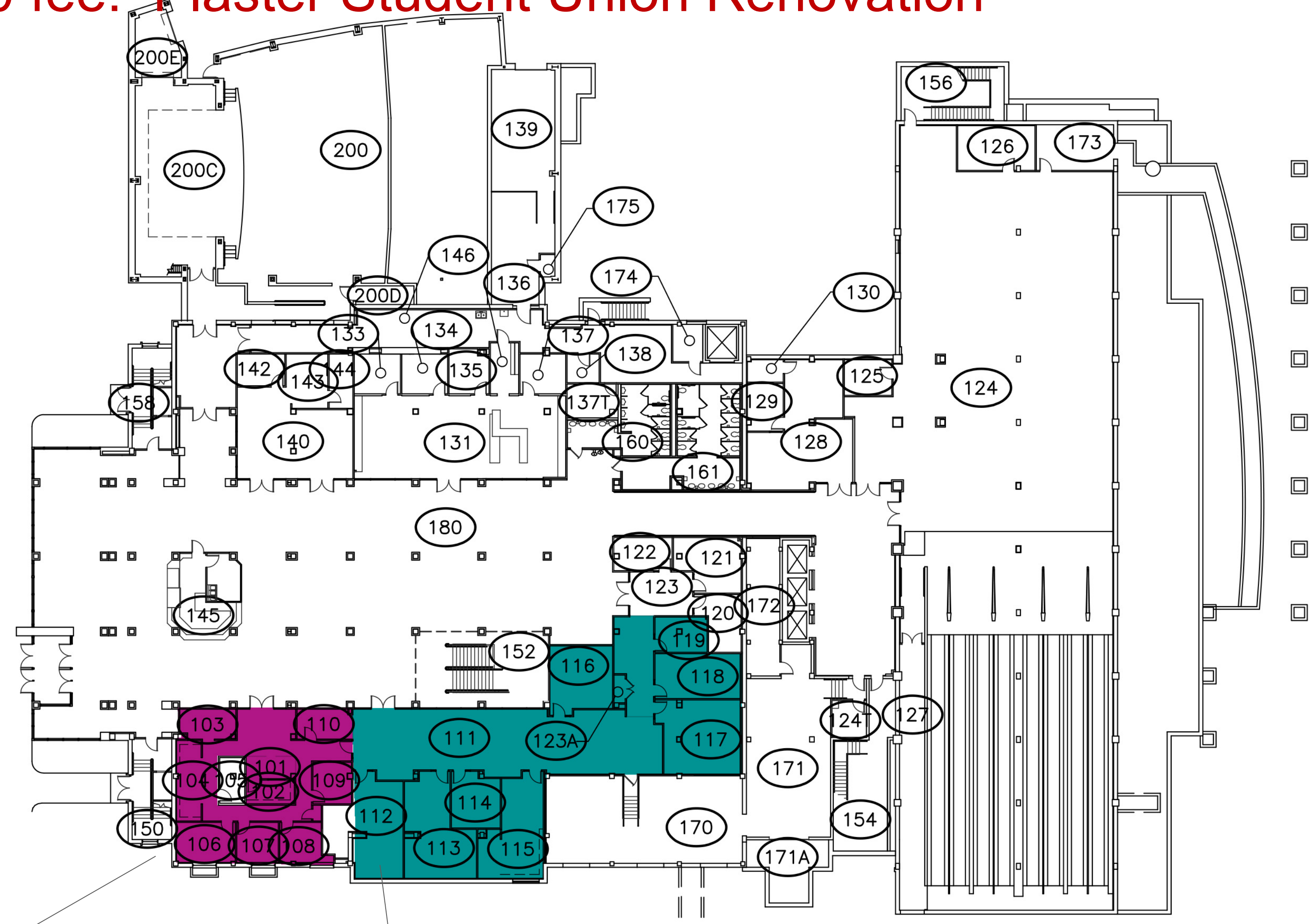
Project Parameters

- Reserve academic space for academic functions
- Downtown campus properties too remote – potentially poor perception
- Facility must be centrally located on campus
- Project to occur as soon as possible

- 1 **PHASE I** (\$0 student fee) = project paid by other University entities
- 2 **PHASE II** (\$20 student fee)



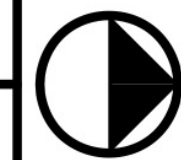
Phase 1 \$0 fee: Plaster Student Union Renovation



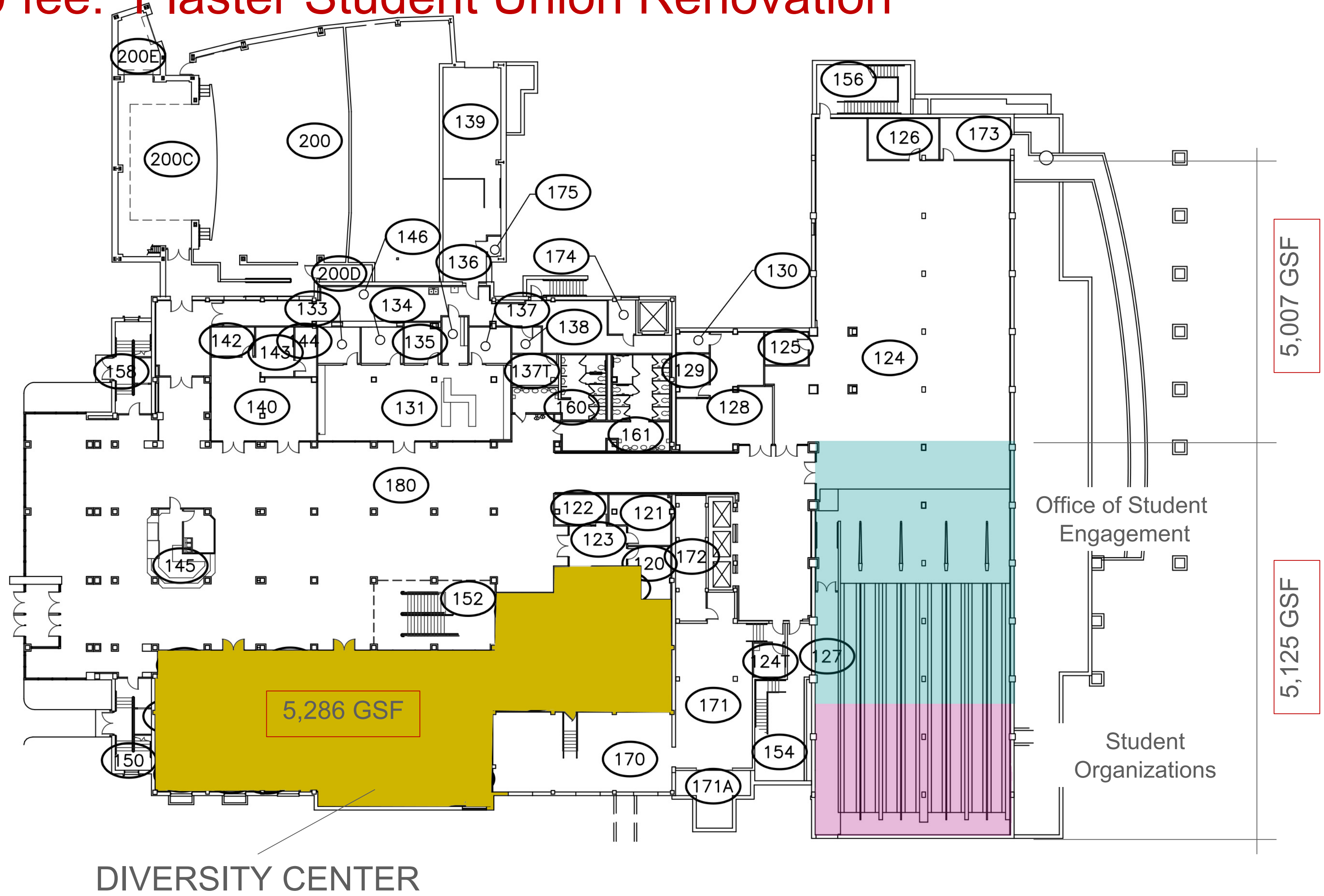
Student Organizations
1,503 GSF

Office of Student Engagement
3,783 GSF

5,286 GSF



Phase 1 \$0 fee: Plaster Student Union Renovation



Phase 1 \$0 fee: Plaster Student Union Renovation



DIVERSITY CENTER

1

Phase 1 \$0 fee: Plaster Student Union Renovation

Timeline:

- 10-12 month timeline

Impact:

- Level 1 Game Center
- Office of Student Engagement
- Student Organizations
- Vacates basement of Freudenberger House @ 2,833 SF.

Considerations:

- Centrally located on campus
- 1st floor is a high traffic / highly visible location in PSU (Prime real-estate across Starbucks)
- Project site contained within one floor of one building (minimal ripple effect)
- Director of PSU, Terry Weber is in favor of this move
- Only disrupts Student Affairs Spaces

Square Footage:

- 5,286 SF **Net gain 1,986 SF**

Total Project Cost: estimated at **\$1.56M**

Diversity Center Renovation = \$780,000

Office of Student Engagement + Student Org Renovation = \$780,000

PROJECT TEAM



Missouri State University
Student Body and Alumni



Stephenie Smith



Rodney Smith

DAKE | WELLS architecture



Angela Shyaka

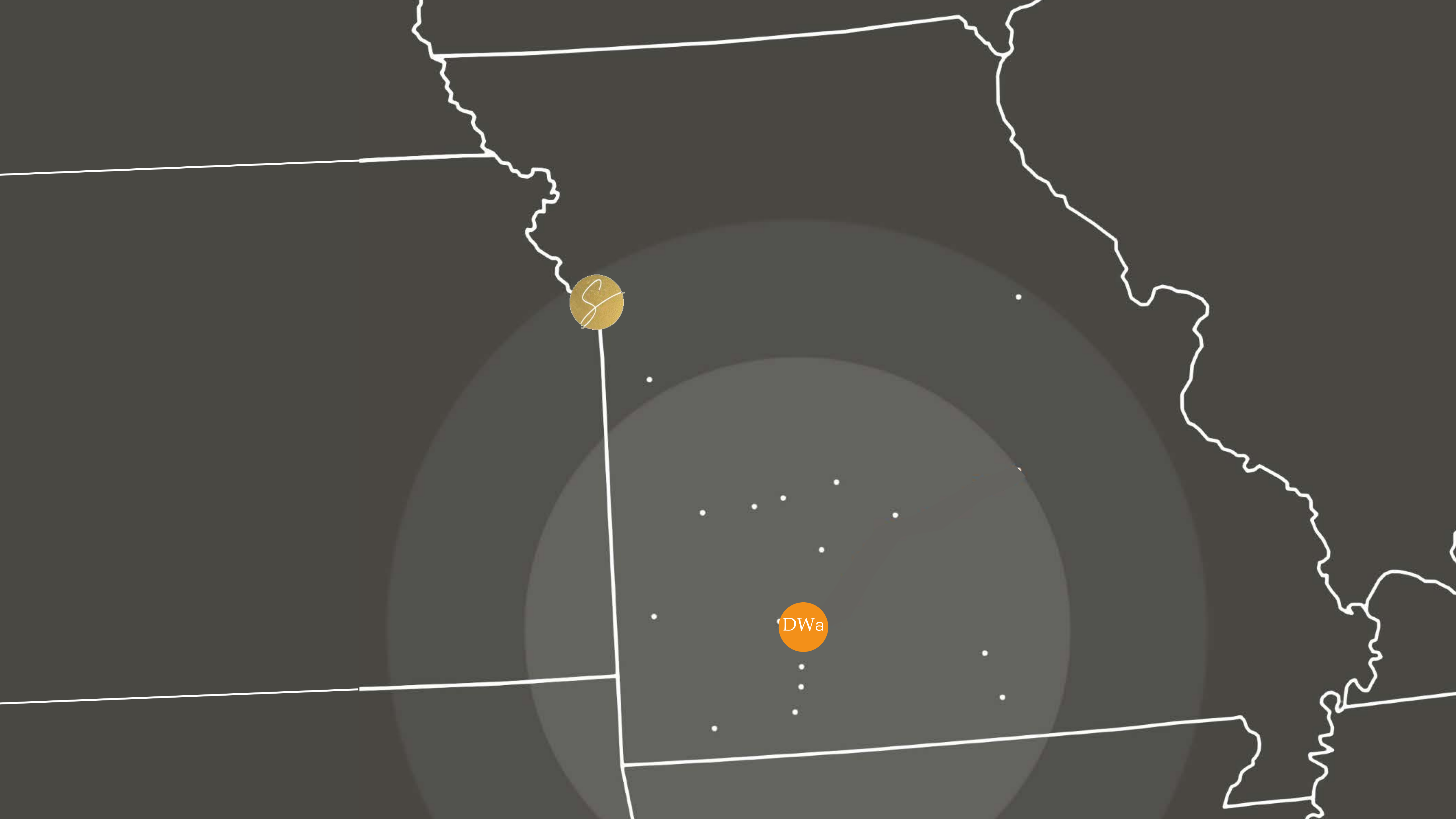


Andrew Wells



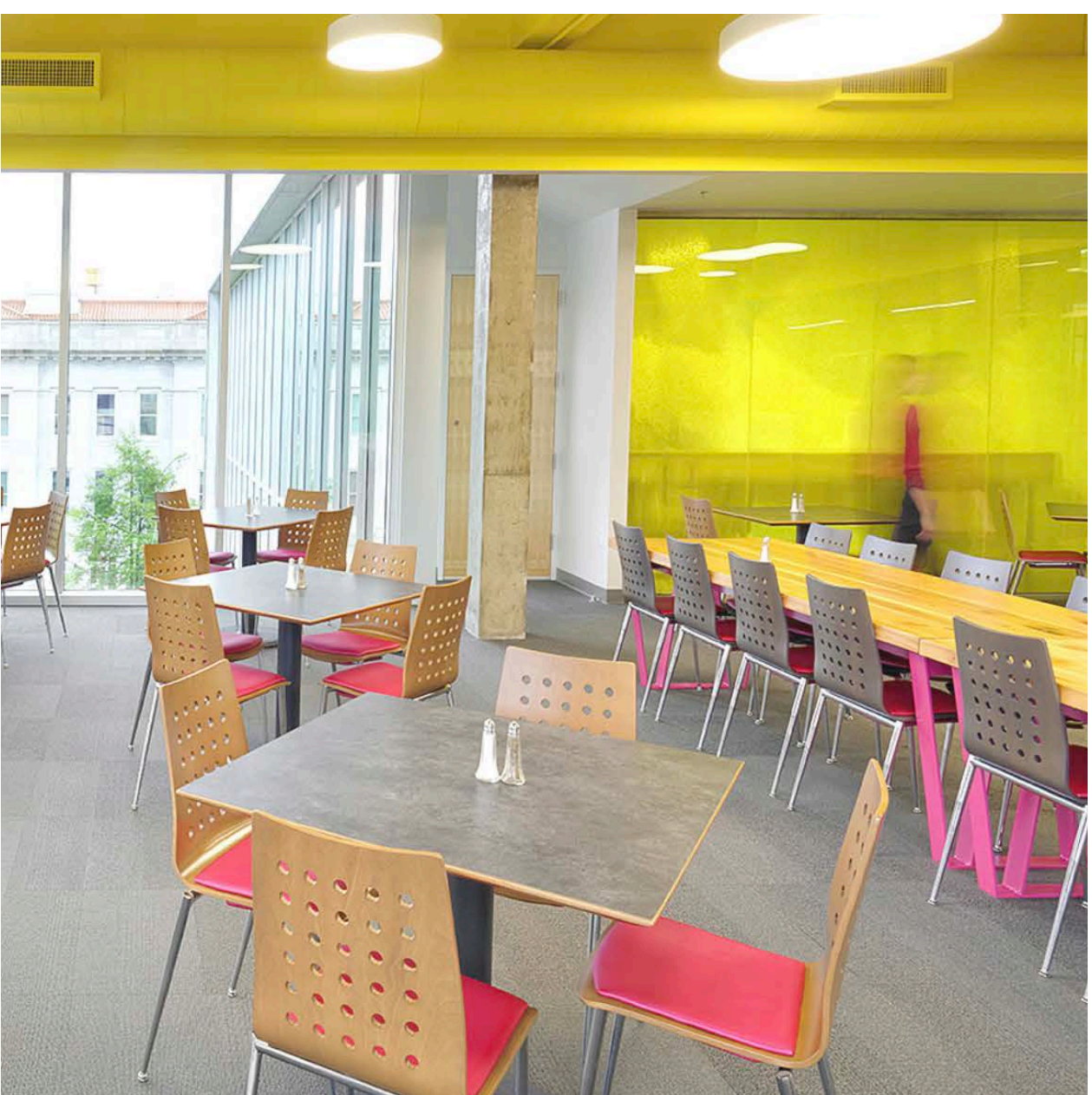
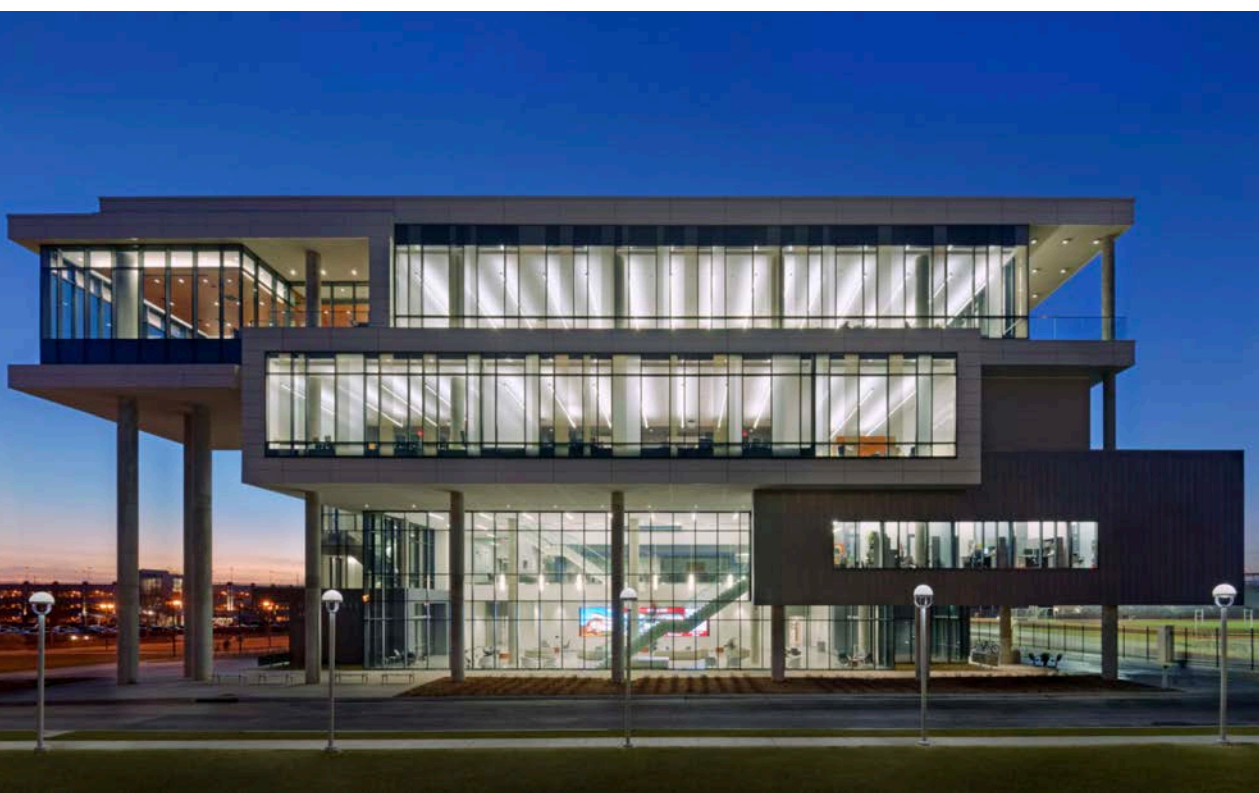
Bethany Henry





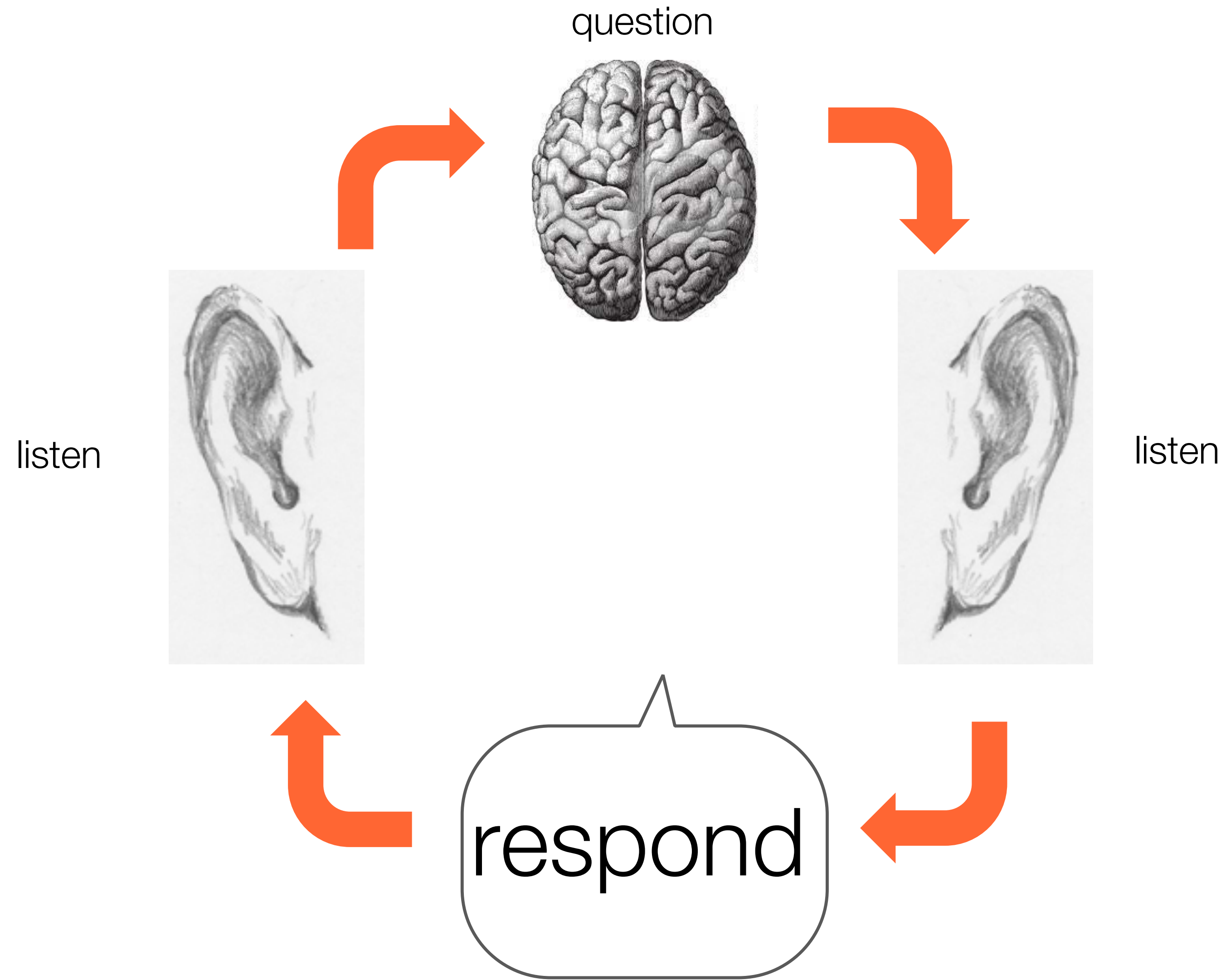
S


DwA



The quality of buildings and spaces has a strong influence on the **quality of people's lives**. Decisions about the design, planning, and management of places can enhance or restrict a sense of belonging. They can increase or reduce feelings of **security**, and stretch or limit boundaries. They can remove **real and imagined barriers** between communities and foster understanding and generosity of spirit.

HOW WE WORK

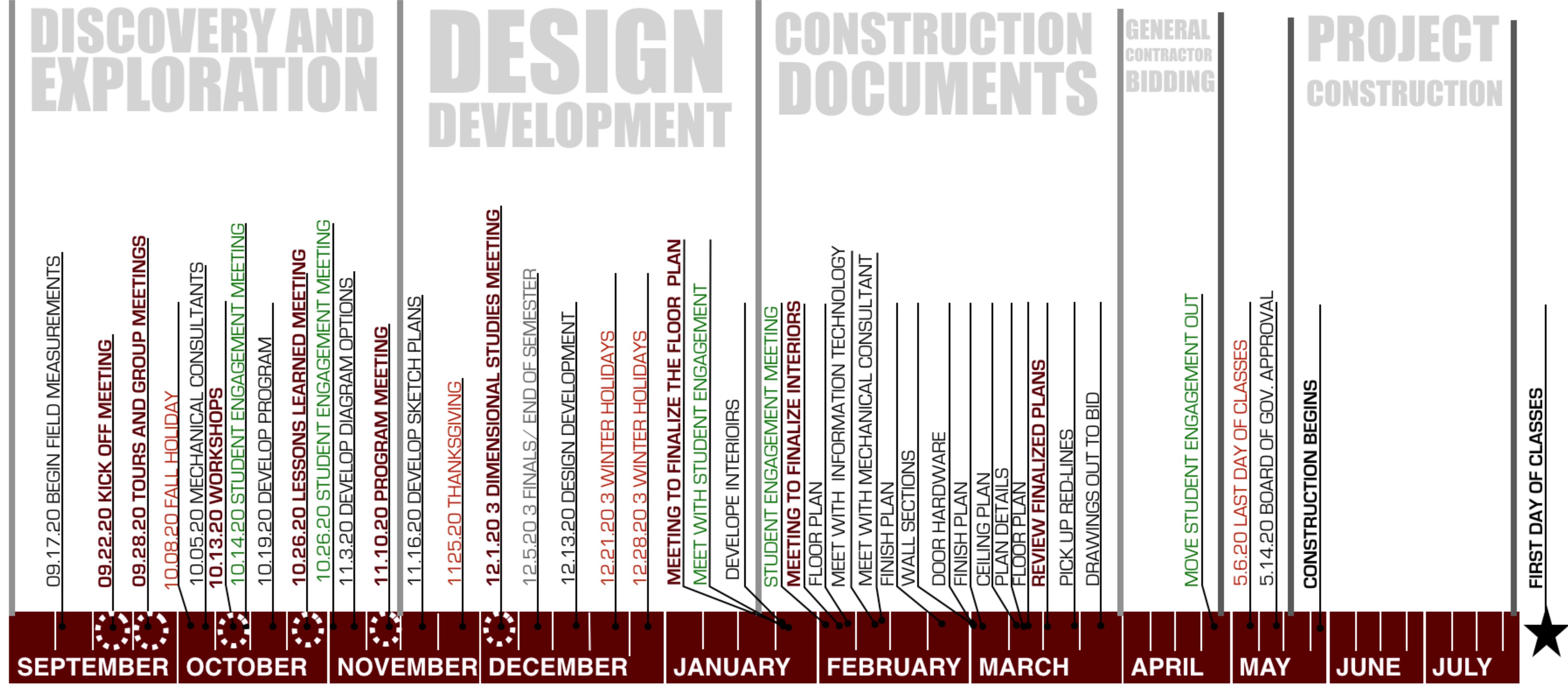




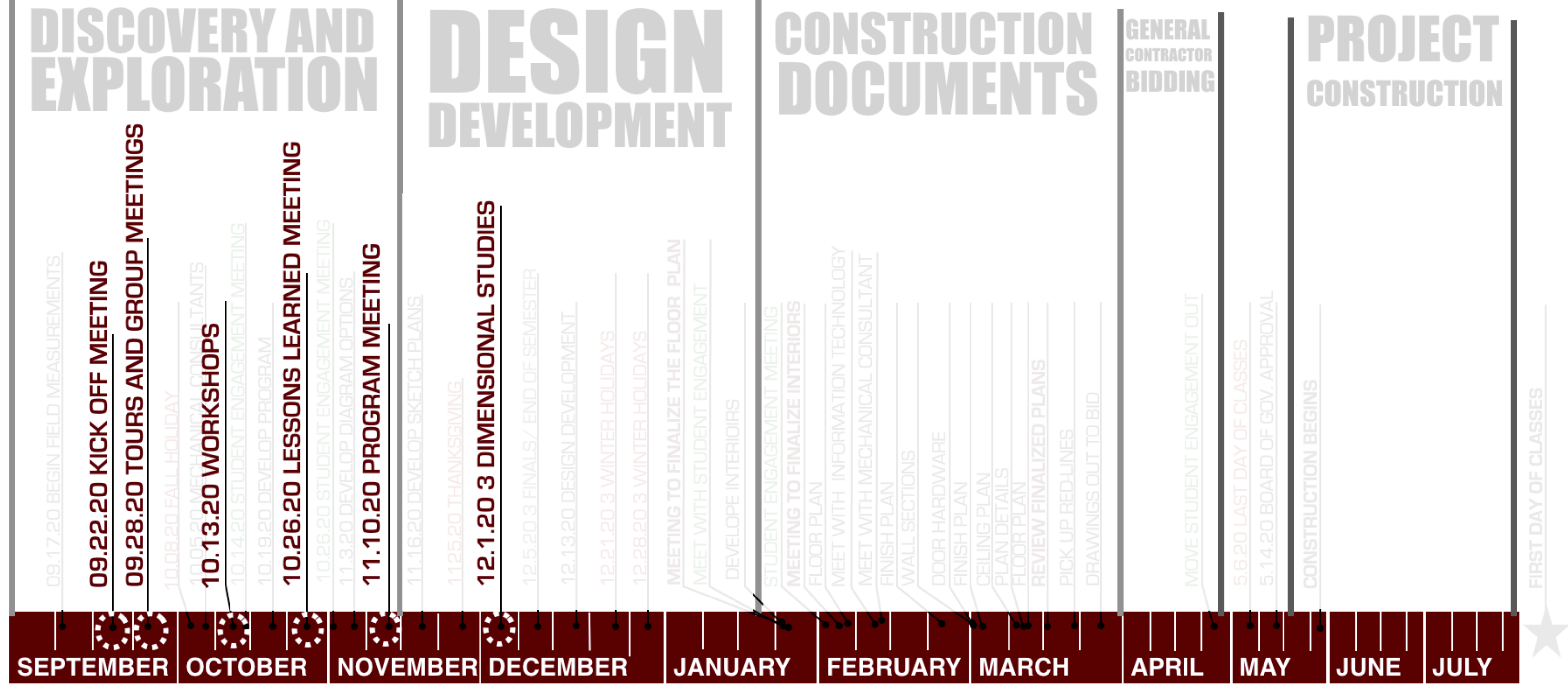
**REMEMBER SEVEN GENERATIONS
IN THE PAST AND
CONSIDER SEVEN GENERATIONS
IN THE FUTURE WHEN
MAKING DECISIONS THAT AFFECT
PEOPLE**

Wilma Mankiller

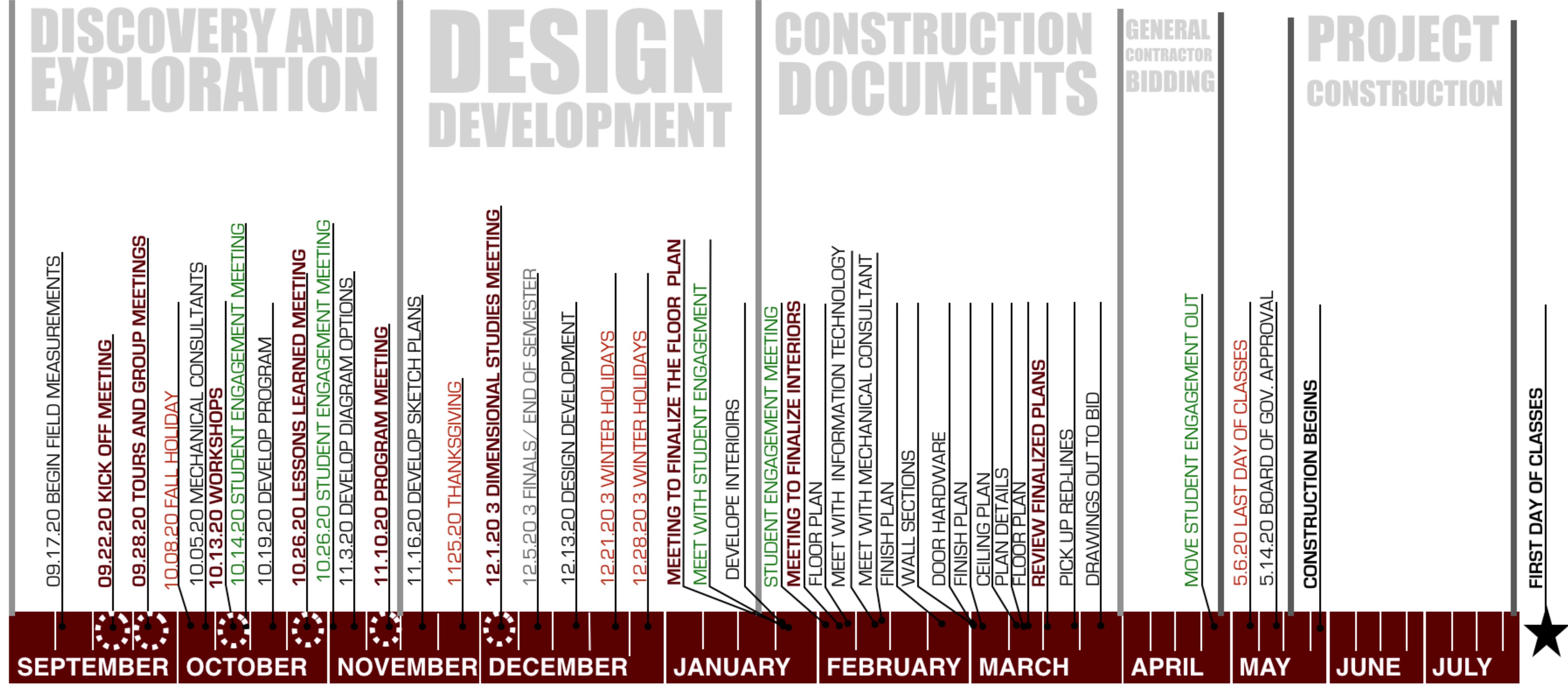
PROJECT SCHEDULE



PROJECT SCHEDULE



PROJECT SCHEDULE



DISCOVERY AND EXPLORATION

DESIGN DEVELOPMENT

CONSTRUCTION DOCUMENTS

GENERAL CONTRACT BIDDING

PROJECT CONSTRUCTION

09.17.20 BEGIN FIELD MEASUREMENTS

09.22.20 KICK OFF MEETING

09.28.20 TOURS AND GROUP MEETINGS

10.08.20 FALL HOLIDAY

10.05.20 MECHANICAL CONSULTANTS

10.13.20 WORKSHOPS

10.14.20 STUDENT ENGAGEMENT MEETING

10.19.20 DEVELOP PROGRAM

10.26.20 LESSONS LEARNED MEETING

10.26.20 STUDENT ENGAGEMENT MEETING

11.3.20 DEVELOP DIAGRAM OPTIONS

11.10.20 PROGRAM MEETING

11.16.20 DEVELOP SKETCH PLANS

11.25.20 THANKSGIVING

12.1.20 3 DIMENSIONAL STUDIES MEETING

12.5.20 3 FINALS/ END OF SEMESTER

12.13.20 DESIGN DEVELOPMENT

12.21.20 3 WINTER HOLIDAYS

12.28.20 3 WINTER HOLIDAYS

MEETING TO FINALIZE THE FLOOR PLAN

MEET WITH STUDENT ENGAGEMENT

DEVELOPE INTERIORS

STUDENT ENGAGEMENT MEETING

MEETING TO FINALIZE INTERIORS

FLOOR PLAN

MEET WITH INFORMATION TECHNOLOGY

MEET WITH MECHANICAL CONSULTANT

FINISH PLAN

WALL SECTIONS

DOOR HARDWARE

FINISH PLAN

CEILING PLAN

PLAN DETAILS

FLOOR PLAN

REVIEW FINALIZED PLANS

PICK UP RED-LINES

DRAWINGS OUT TO BID

MOVE STUDENT ENGAGEMENT OUT

5.6.20 LAST DAY OF CLASSES

5.14.20 BOARD OF GOV. APPROVAL

CONSTRUCTION BEGINS

FIRST DAY OF CLASSES

SEPTEMBER

OCTOBER

NOVEMBER

DECEMBER

JANUARY

FEBRUARY

MARCH

APRIL

MAY

JUNE

JULY

PROJECT SCHEDULE

DISCOVERY AND EXPLORATION

DESIGN

CONSTRUCTION DOCUMENTS

GENERAL CONTRACTOR BIDDING

PROJECT CONSTRUCTION

FIELD MEASUREMENTS



09.17.20 BEGIN FIELD MEASUREMENTS

09.22.20 KICK OFF MEETING

09.28.20 TOURS AND GROUP MEETINGS

10.08.20 FALL HOLIDAY

10.05.20 MECHANICAL CONSULTANTS

10.13.20 WORKSHOPS

10.14.20 STUDENT ENGAGEMENT MEETING

10.19.20 DEVELOP PROGRAM

10.26.20 LESSONS LEARNED MEETING

10.26.20 STUDENT ENGAGEMENT MEETING

11.3.20 DEVELOP DIAGRAM OPTIONS

11.10.20 PROGRAM MEETING

11.16.20 DEVELOP SKETCH PLANS

11.25

12.1.2

12.5.2

12.13

12.21

12.28

MEET

MEET

DEVE

STUDI

MEET

FLOOR

MEET

MEET

FINISH

WALL

DOOR

FINISH

CEILIN

PLAN

FLOOR

REVIE

PICK I

DRAW

MOVE

5.6.20

5.14.2

CONS

FIRST

SEPTEMBER

OCTOBER

NOVEMBER

DECEMBER

JANUARY

FEBRUARY

MARCH

APRIL

MAY

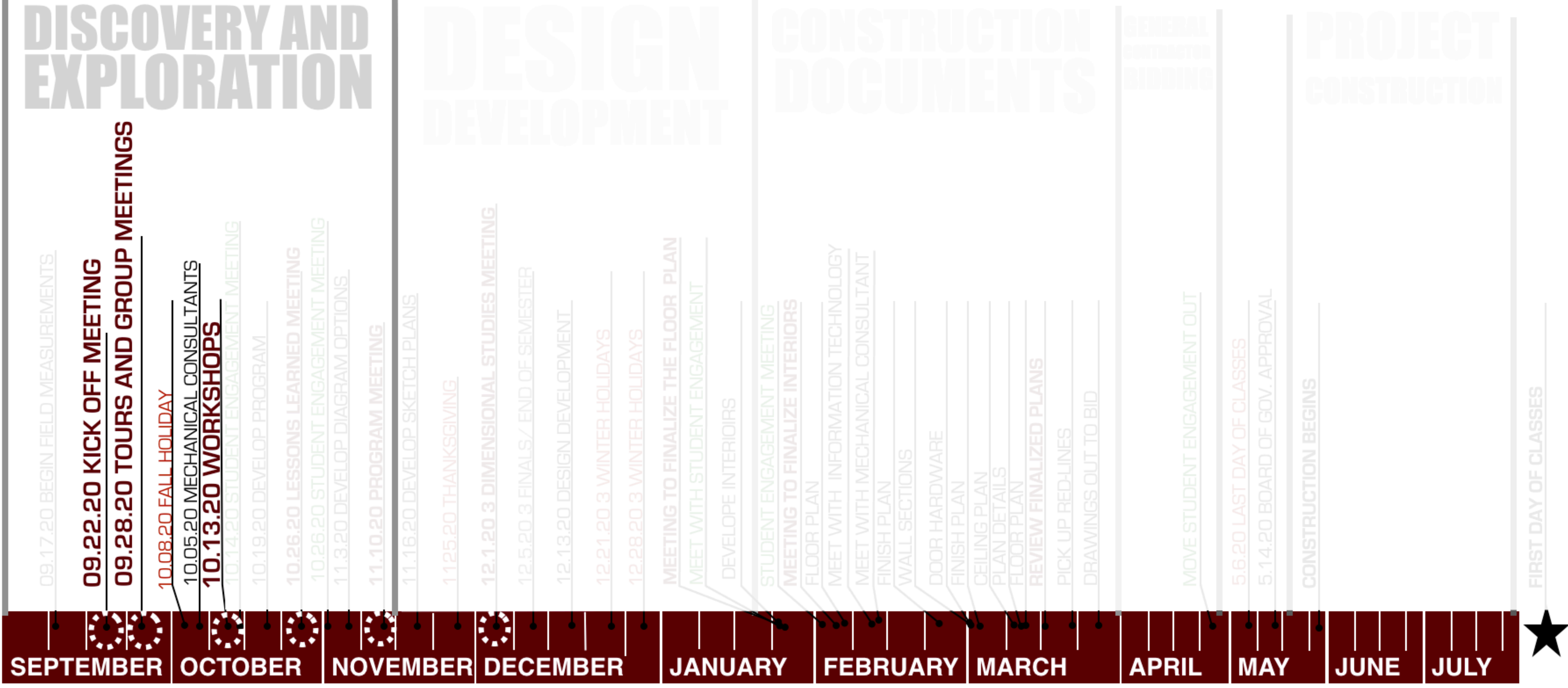
JUNE

JULY



PROJECT SCHEDULE

PROJECT SCHEDULE



DISCOVERY AND EXPLORATION

DESIGN DISCOVERY

CONSTRUCTION DOCUMENTS

GENERAL CONTRACT BIDDING

PROJECT CONSTRUCTION

09.17.20 BEGIN FIELD MEASUREMENTS

09.22.20 KICK OFF MEETING

09.28.20 TOURS AND GROUP MEETINGS

10.08.20 FALL HOLIDAY

10.05.20 MECHANICAL CONSULTANTS

10.13.20 WORKSHOPS

10.14.20 STUDENT ENGAGEMENT MEETING

10.19.20 DEVELOP PROGRAM

10.26.20 LESSONS LEARNED MEETING

10.26.20 STUDENT ENGAGEMENT MEETING

11.3.20 DEVELOP DIAGRAM OPTIONS

11.10.20 PROGRAM MEETING

11.16.20 DEVELOP SKETCH PLANS

11.25.20 THANKSGIVING

12.1.20

12.5.20

12.13.20

12.21.20

12.28.20

MEET

MEET

DEVE

STUDI

MEET

FLOOR

MEET

MEET

FINISH

WALL

DOOR

FINISH

CEILIN

PLAN

FLOOR

REVIE

PICK I

DRAW

MOVE STUDENT ENGAGEMENT OUT

5.6.20 LAST DAY OF CLASSES

5.14.20 BOARD OF GOV. APPROVAL

CONSTRUCTION BEGINS

FIRST DAY OF CLASSES



PROJECT SCHEDULE



DISCOVERY AND EXPLORATION

DESIGN DEVELOPMENT

CONSTRUCTION DOCUMENTS

GENERAL CONTRACT BIDDING

PROJECT CONSTRUCTION

09.17.20 BEGIN FIELD MEASUREMENTS

09.22.20 KICK OFF MEETING

09.28.20 TOURS AND GROUP MEETINGS

10.08.20 FALL HOLIDAY

10.05.20 MECHANICAL CONSULTANTS

10.13.20 WORKSHOPS

10.14.20 STUDENT ENGAGEMENT MEETING

10.19.20 DEVELOP PROGRAM

10.26.20 LESSONS LEARNED MEETING

10.26.20 STUDENT ENGAGEMENT MEETING

11.3.20 DEVELOP DIAGRAM OPTIONS

11.10.20 PROGRAM MEETING

11.16.20 DEVELOP SKETCH PLANS

11.25.20 THANKSGIVING

12.1.20 3 DIMENSIONAL STUDIES MEETING

12.5.20 3 FINALS/ END OF SEMESTER

12.13.20 DESIGN DEVELOPMENT

12.21.20 3 WINTER HOLIDAYS

12.28.20 3 WINTER HOLIDAYS

MEETING TO FINALIZE THE FLOOR PLAN

MEET WITH STUDENT ENGAGEMENT

DEVELOPE INTERIORS

STUDENT ENGAGEMENT MEETING

MEETING TO FINALIZE INTERIORS

FLOOR PLAN

MEET WITH INFORMATION TECHNOLOGY

MEET WITH MECHANICAL CONSULTANT

FINISH PLAN

WALL SECTIONS

DOOR HARDWARE

FINISH PLAN

CEILING PLAN

PLAN DETAILS

FLOOR PLAN

REVIEW FINALIZED PLANS

PICK UP RED-LINES

DRAWINGS OUT TO BID

MOVE STUDENT ENGAGEMENT OUT

5.6.20 LAST DAY OF CLASSES

5.14.20 BOARD OF GOV. APPROVAL

CONSTRUCTION BEGINS

FIRST DAY OF CLASSES

SEPTEMBER

OCTOBER

NOVEMBER

DECEMBER

JANUARY

FEBRUARY

MARCH

APRIL

MAY

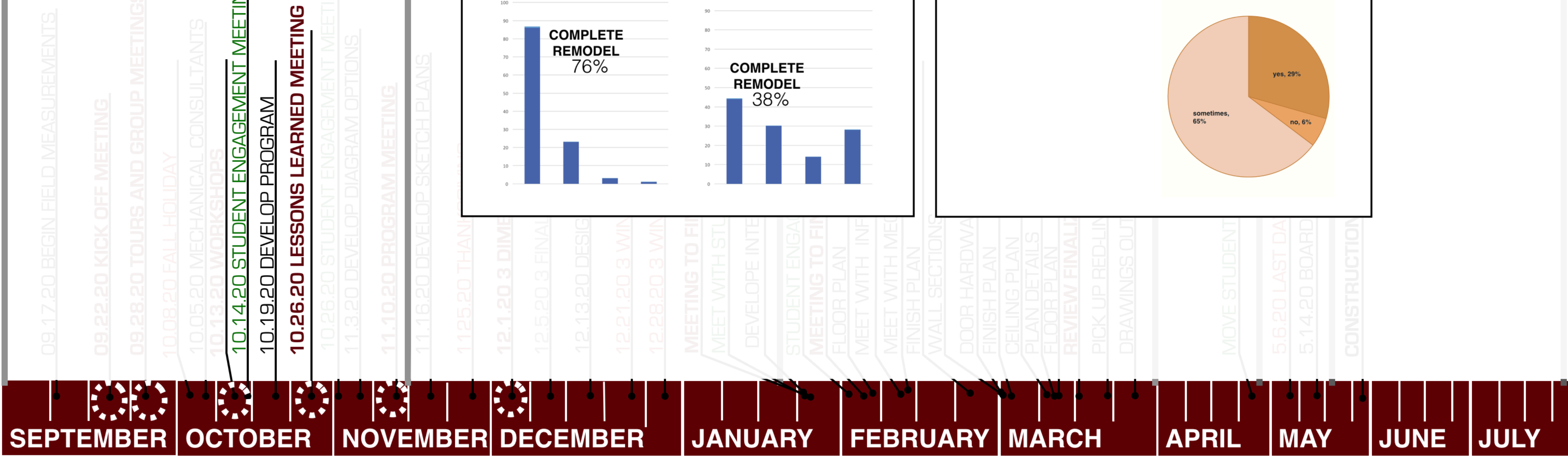
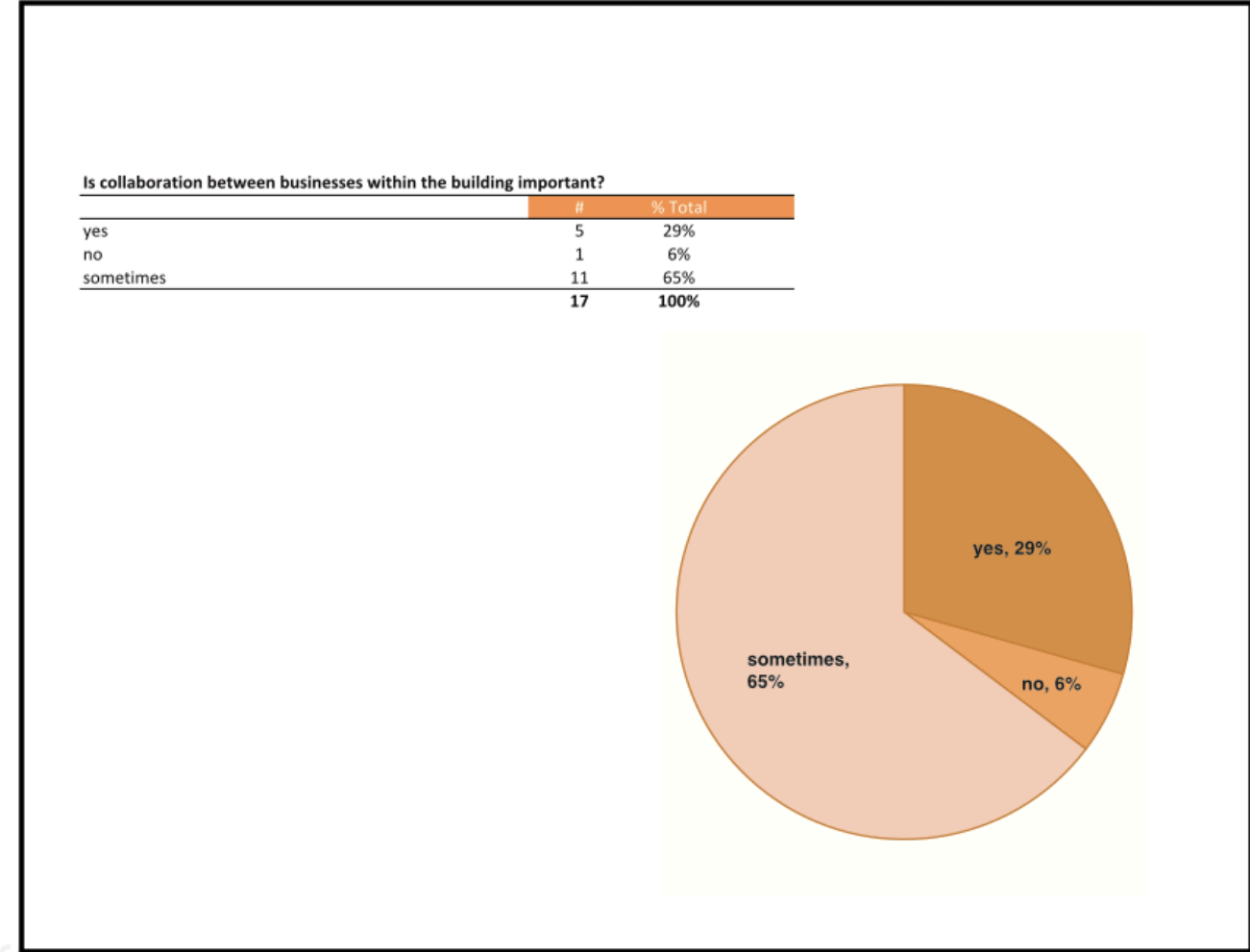
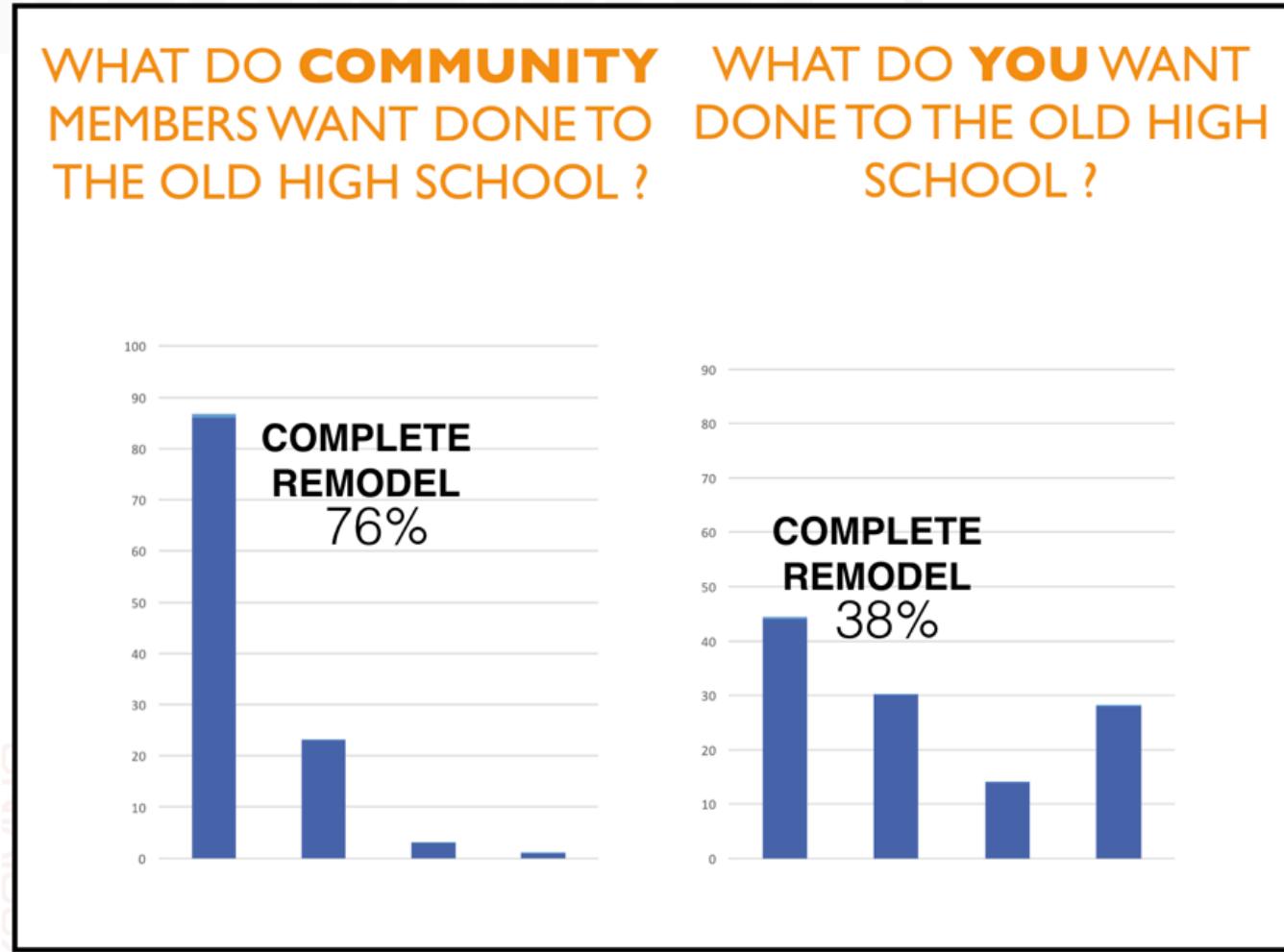
JUNE

JULY

PROJECT SCHEDULE

DISCOVERY AND EXPLORATION

LESSONS LEARNED



PROJECT SCHEDULE

DISCOVERY AND EXPLORATION

DESIGN DEVELOPMENT

CONSTRUCTION DOCUMENTS

GENERAL CONTRACT BIDDING

PROJECT CONSTRUCTION

09.17.20 BEGIN FIELD MEASUREMENTS

09.22.20 KICK OFF MEETING

09.28.20 TOURS AND GROUP MEETINGS

10.08.20 FALL HOLIDAY

10.05.20 MECHANICAL CONSULTANTS

10.13.20 WORKSHOPS

10.14.20 STUDENT ENGAGEMENT MEETING

10.19.20 DEVELOP PROGRAM

10.26.20 LESSONS LEARNED MEETING

10.26.20 STUDENT ENGAGEMENT MEETING

11.3.20 DEVELOP DIAGRAM OPTIONS

11.10.20 PROGRAM MEETING

11.16.20 DEVELOP SKETCH PLANS

11.25.20 THANKSGIVING

12.1.20 3 DIMENSIONAL STUDIES MEETING

12.5.20 3 FINALS/ END OF SEMESTER

12.13.20 DESIGN DEVELOPMENT

12.21.20 3 WINTER HOLIDAYS

12.28.20 3 WINTER HOLIDAYS

MEETING TO FINALIZE THE FLOOR PLAN

MEET WITH STUDENT ENGAGEMENT

DEVELOPE INTERIOIRS

STUDENT ENGAGEMENT MEETING

MEETING TO FINALIZE INTERIORS

FLOOR PLAN

MEET WITH INFORMATION TECHNOLOGY

MEET WITH MECHANICAL CONSULTANT

FINISH PLAN

WALL SECTIONS

DOOR HARDWARE

FINISH PLAN

CEILING PLAN

PLAN DETAILS

FLOOR PLAN

REVIEW FINALIZED PLANS

PICK UP RED-LINES

DRAWINGS OUT TO BID

MOVE STUDENT ENGAGEMENT OUT

5.6.20 LAST DAY OF CLASSES

5.14.20 BOARD OF GOV. APPROVAL

CONSTRUCTION BEGINS

FIRST DAY OF CLASSES

SEPTEMBER

OCTOBER

NOVEMBER

DECEMBER

JANUARY

FEBRUARY

MARCH

APRIL

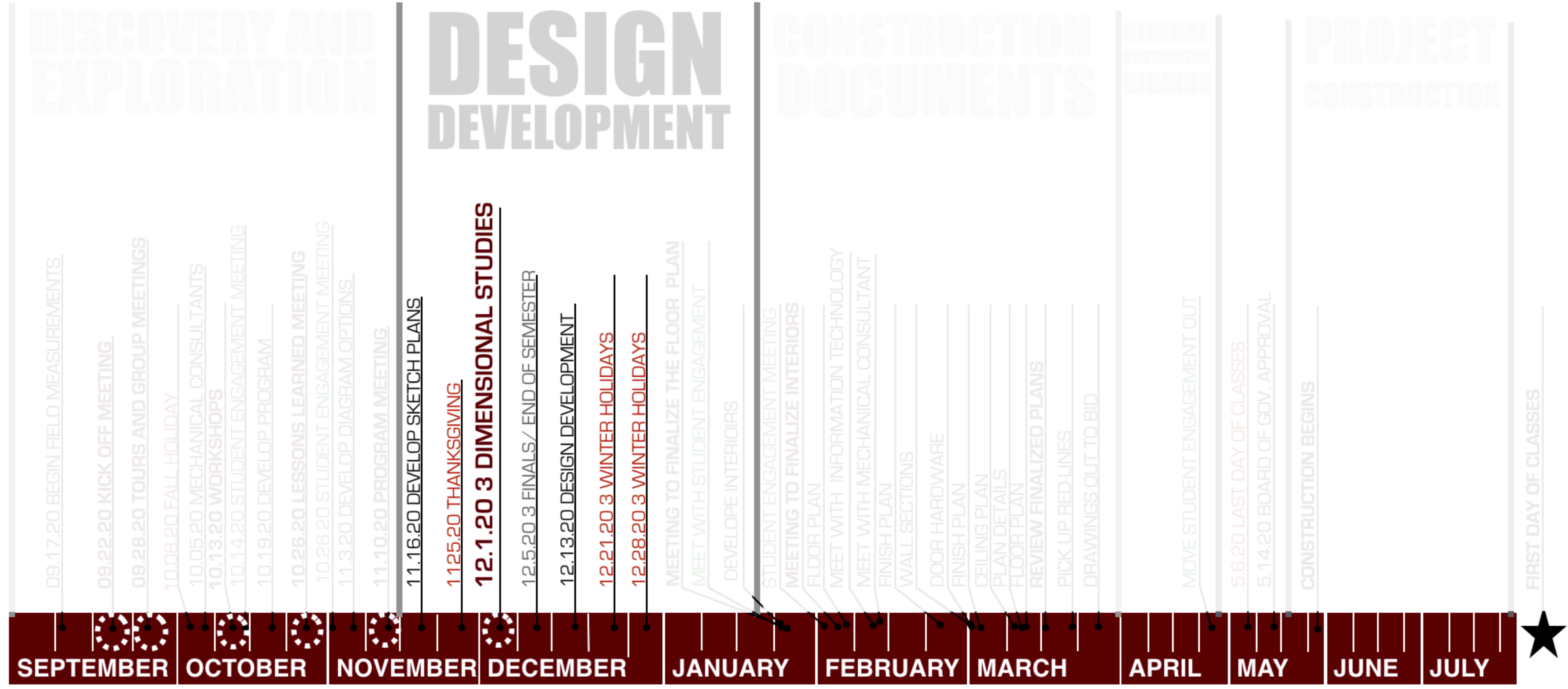
MAY

JUNE

JULY

PROJECT SCHEDULE

PROJECT SCHEDULE



DISCOVERY AND EXPLORATION

DESIGN DEVELOPMENT

3 DIMENSIONAL STUDIES

09.17.20 BEGIN FIELD MEASUREMENTS

09.22.20 KICK OFF MEETING

09.28.20 TOURS AND GROUP MEETINGS

10.08.20 FALL HOLIDAY

10.05.20 MECHANICAL CONSULTANTS

10.13.20 WORKSHOPS

10.14.20 STUDENT ENGAGEMENT MEETING

10.19.20 DEVELOP PROGRAM

10.26.20 LESSONS LEARNED MEETING

10.26.20 STUDENT ENGAGEMENT MEETING

11.3.20 DEVELOP DIAGRAM OPTIONS

11.10.20 PROGRAM MEETING

11.16.20 DEVELOP SKETCH PLANS

11.25.20 THANKSGIVING

12.1.20 3 DIMENSIONAL STUDIES MEETING

12.5.20 3 FINALS / END OF SEMESTER

12.13.20 DESIGN DEVELOPMENT

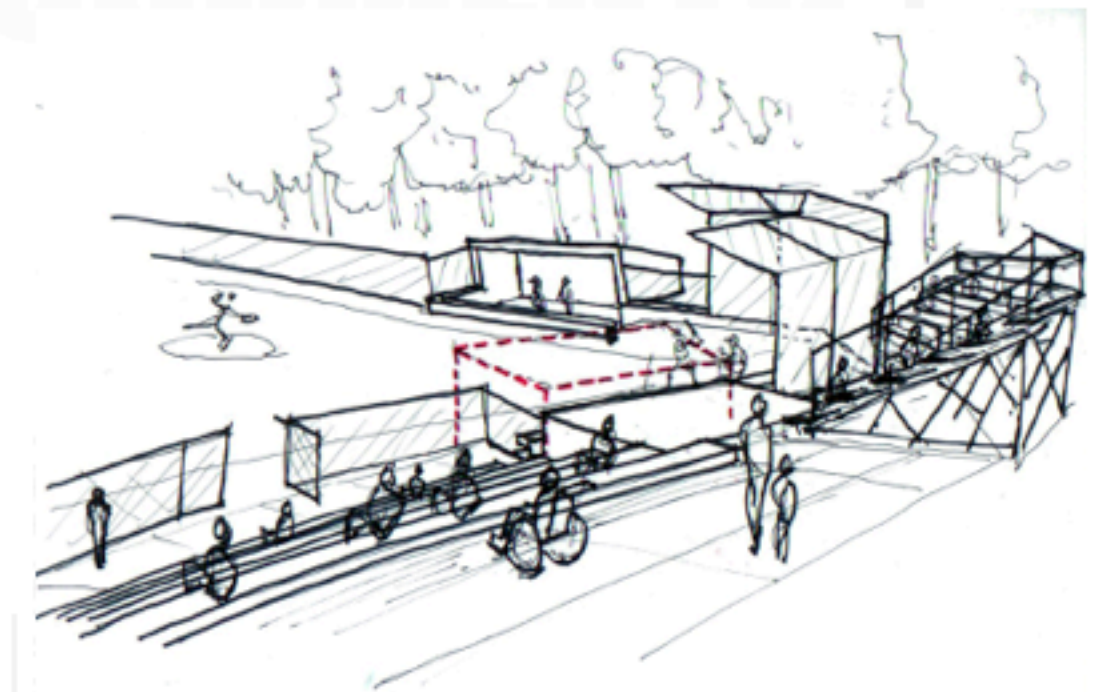
12.21.20 3 WINTER HOLIDAYS

12.28.20 3 WINTER HOLIDAYS

STUDENT ENGAGEMENT MEETING

MEETING TO FINALIZE INTERIORS

FLOOR PLAN



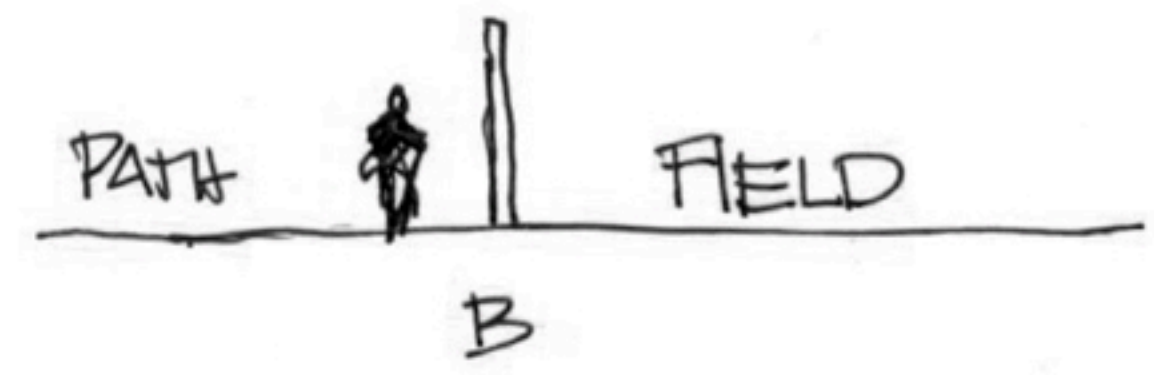
MOVE STUDENT ENGAGEMENT OUT

5.6.20 LAST DAY OF CLASSES

5.14.20 BOARD OF GOV. APPROVAL

CONSTRUCTION BEGINS

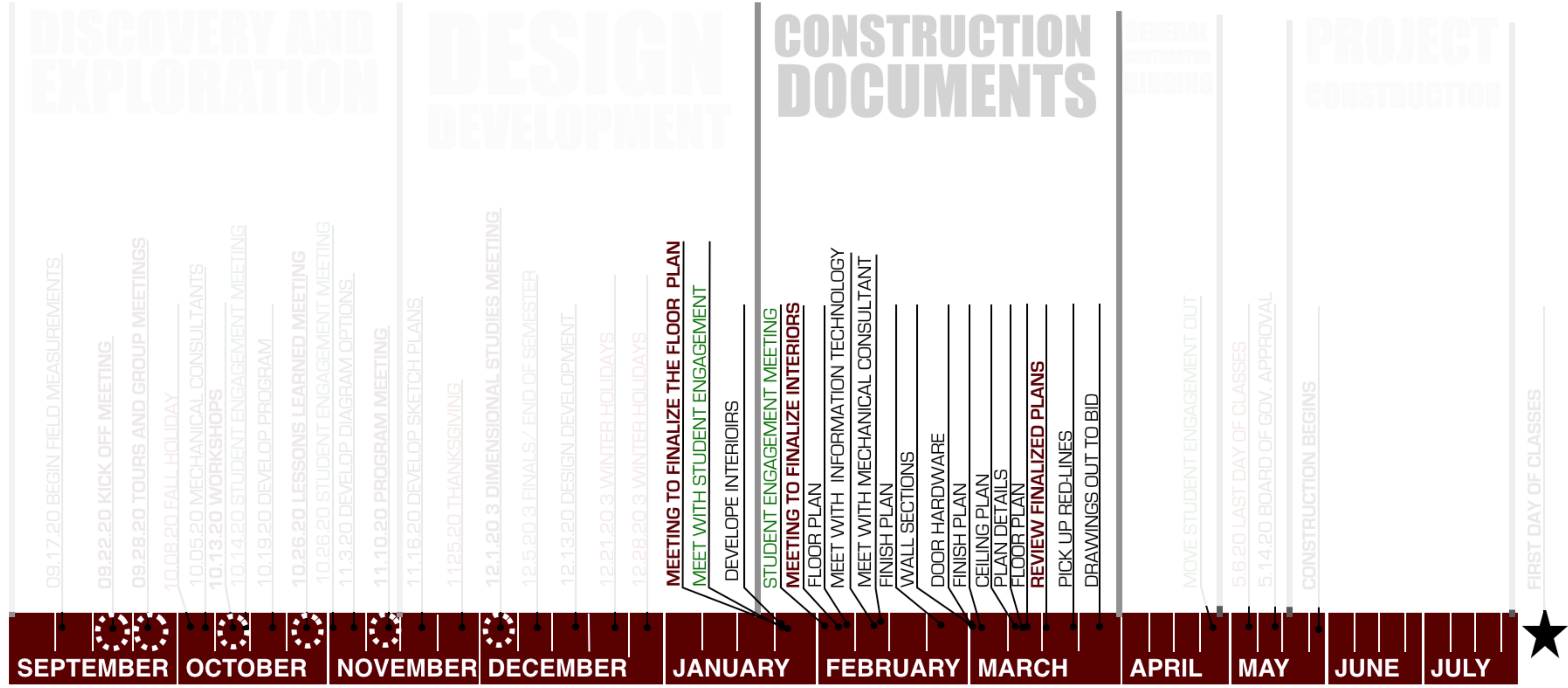
FIRST DAY OF CLASSES



PROJECT SCHEDULE



PROJECT SCHEDULE



DISCOVERY AND
EXPLORATION

DESIGN
DEVELOPMENT

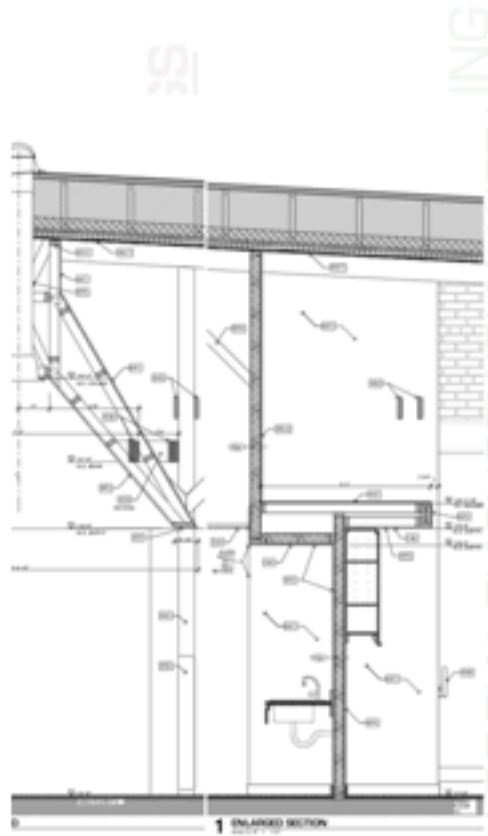
CONSTRUCTION
DOCUMENTS

GENERAL
CONTRACT
BIDDING

PROJECT
CONSTRUCTION

CONSTRUCTION DOCUMENTS

09.17.20 BEGIN FIELD MEASUREMENTS



10.19.20 DEVELOP PROGRAM



12.21.20-3 WINTER HOLIDAYS

12.28.20-3 WINTER HOLIDAYS

MEETING TO FINALIZE THE FLOOR PLAN

MEET WITH STUDENT ENGAGEMENT

DEVELOPE INTERIORS

STUDENT ENGAGEMENT MEETING

MEETING TO FINALIZE INTERIORS

FLOOR PLAN

MEET WITH INFORMATION TECHNOLOGY

MEET WITH MECHANICAL CONSULTANT

FINISH PLAN

WALL SECTIONS

DOOR HARDWARE

FINISH PLAN

CEILING PLAN

PLAN DETAILS

FLOOR PLAN

REVIEW FINALIZED PLANS

PICK UP RED-LINES

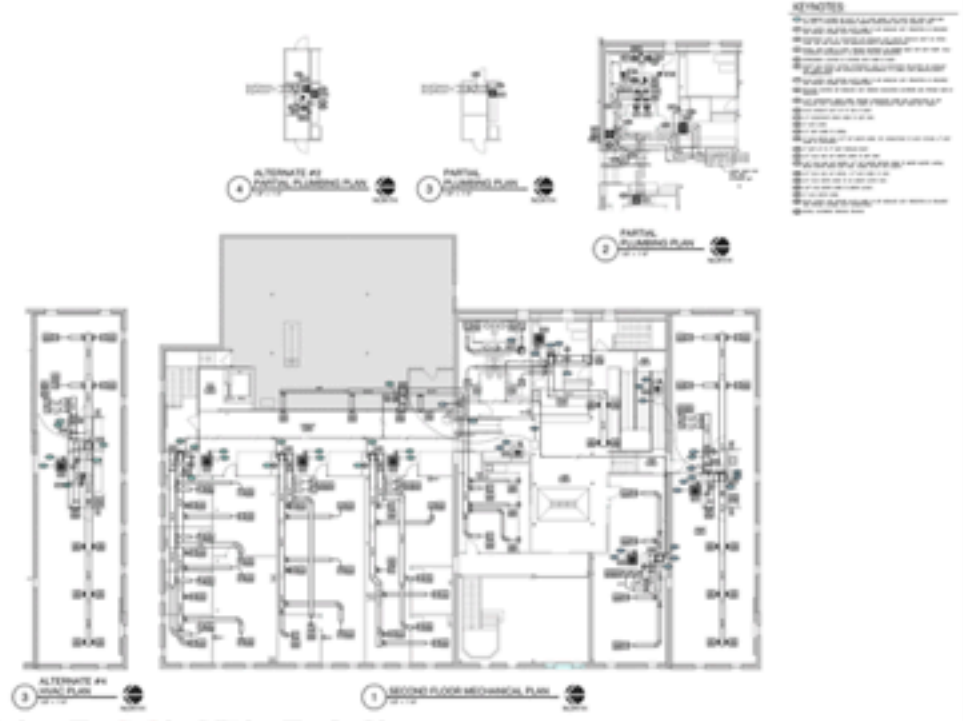
DRAWINGS OUT TO BID

MOVE STUDENT

5.6.20 LAST CLASS

5.14.20 BOAF

CONSTRUCTIC



FIRST DAY OF CLASSES



SEPTEMBER

OCTOBER

NOVEMBER

DECEMBER

JANUARY

FEBRUARY

MARCH

APRIL

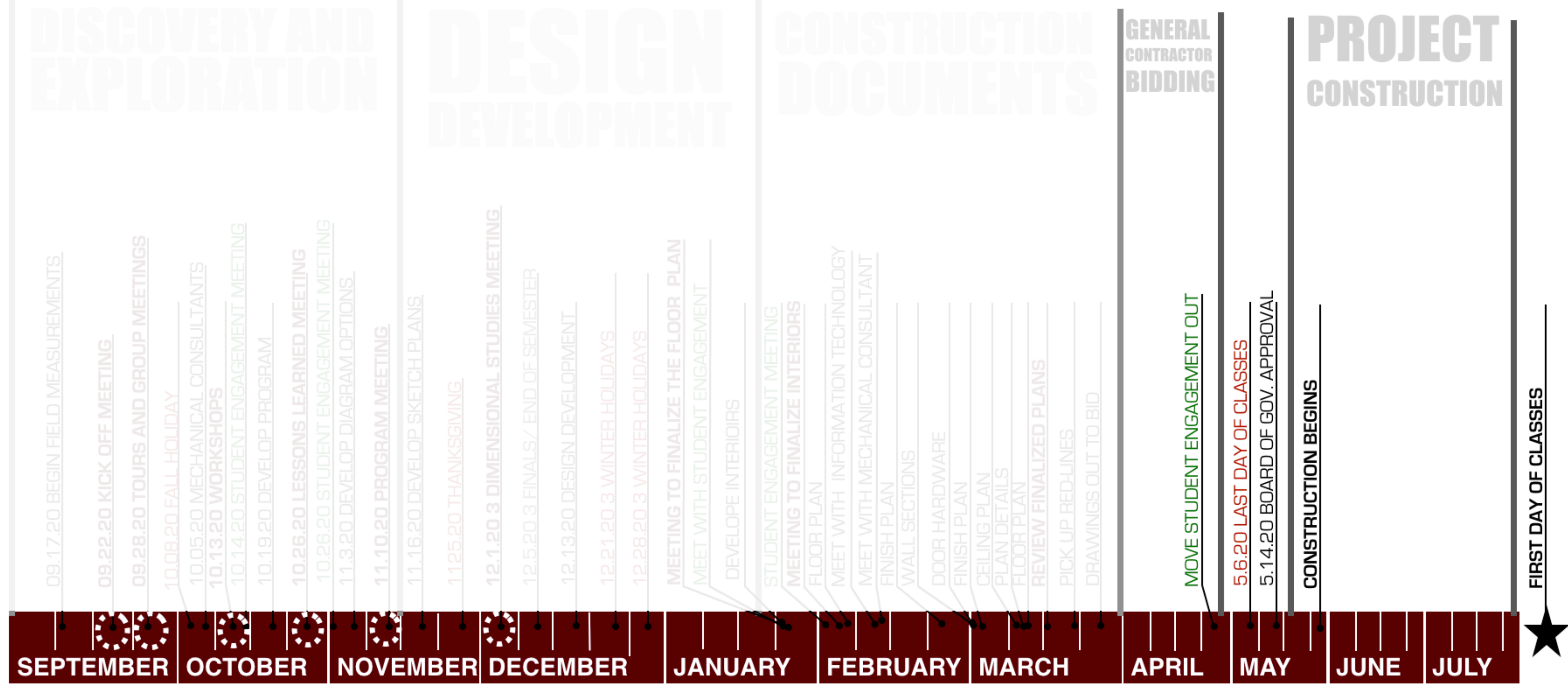
MAY

JUNE

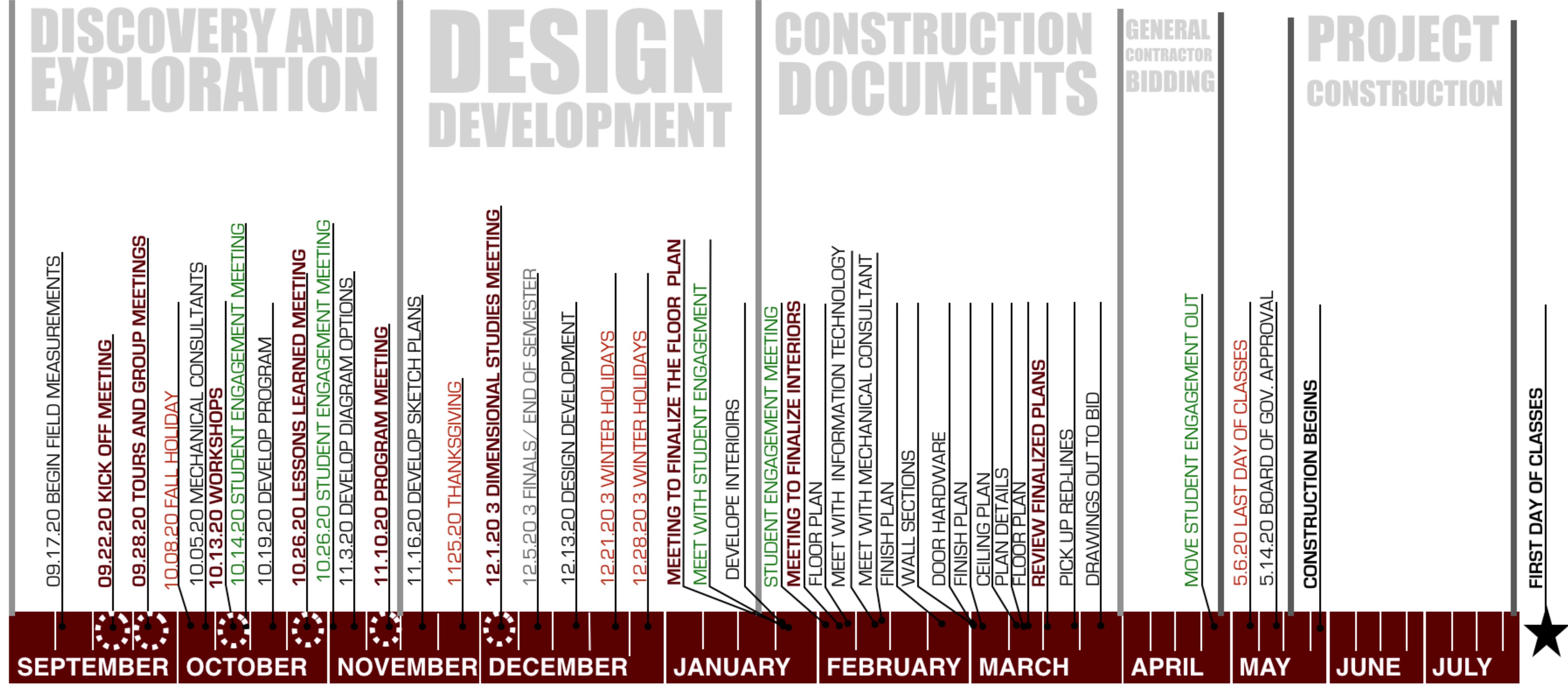
JULY

PROJECT SCHEDULE

PROJECT SCHEDULE



PROJECT SCHEDULE





**“REAL CHANGE,
ENDURING CHANGE,
HAPPENS ONE STEP AT A TIME”**

Ruth Bader Ginsburg

QUESTIONS ?????



WHAT IS THE PURPOSE OF THE *CURRENT* MULTI-CULTURAL RESOURCE CENTER?

WHAT SHOULD THE PURPOSE BE FOR THE *NEW* MULTI-CULTURAL RESOURCE CENTER?

WHAT SHOULD THE **NAME** OF THE NEW SPACE BE?

WRITE SOME IDEAS YOU HAVE FOR THE SPACE ON THE POST IT NOTES



“AKABURIYE MU ISIZA, NTIKABONEKERA MU ISAKARA”

What is not found during the plowing of the plot, will not be found when
the roof is installed

Rwandan Proverb

WHEN?
WHY?
WHO?
WHAT?
WHERE?

CONTEXTUALIZING CULTURAL CENTERS

1950-70s

WHEN?
WHY?
WHO?
WHAT?
WHERE?



Civil Rights Movement



Brown vs. Board of Education



Women's Liberation Movement



LGBT[QIA+] Movement

WHEN?

WHY?

WHO?

WHAT?

WHERE?

1. Increase of underrepresented racial/ethnic population in
Predominantly White Institutions
2. Changing campus demographic and landscape

WHEN?

WHY?

WHO?

WHAT?

WHERE?

BEFORE

Underrepresented racial/ethnic population

TODAY

Context expanded from Black-White to more inclusive multicultural paradigm:

More diverse underrepresented racial/ethnic population

LGBTQIA+

Women

Students with disabilities

Students with mental health

WHEN?
WHY?
WHO?
WHAT?
WHERE?

BEFORE

Black Culture Centers
Minority Student Services
Ethnic and Cultural Studies

TODAY

Multicultural
Race-Specific
LGBTQIA+
Women's
Disability
Meditation/Reflection
Mental Health

WHEN?

WHY?

WHO?

WHAT?

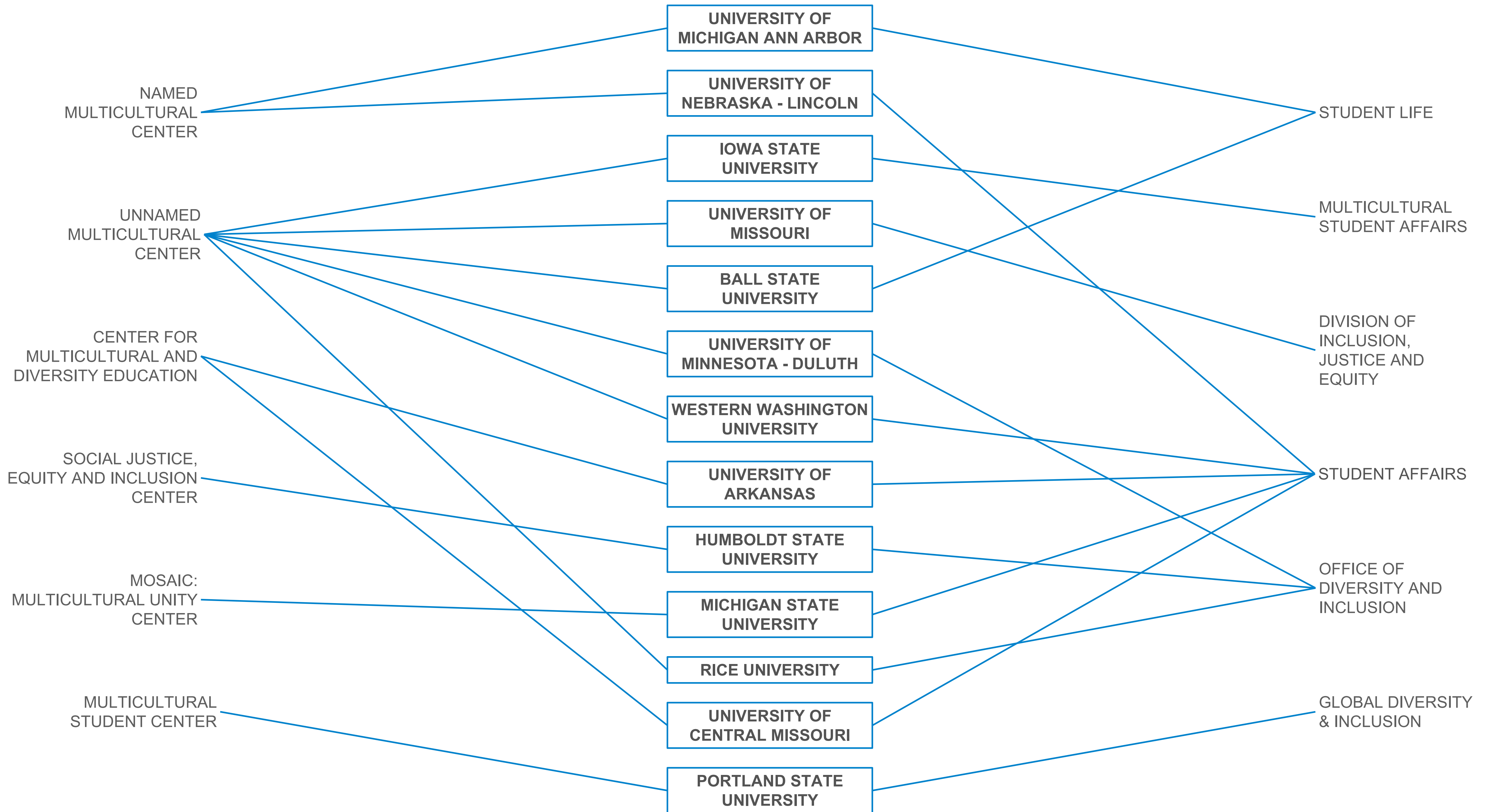
WHERE?

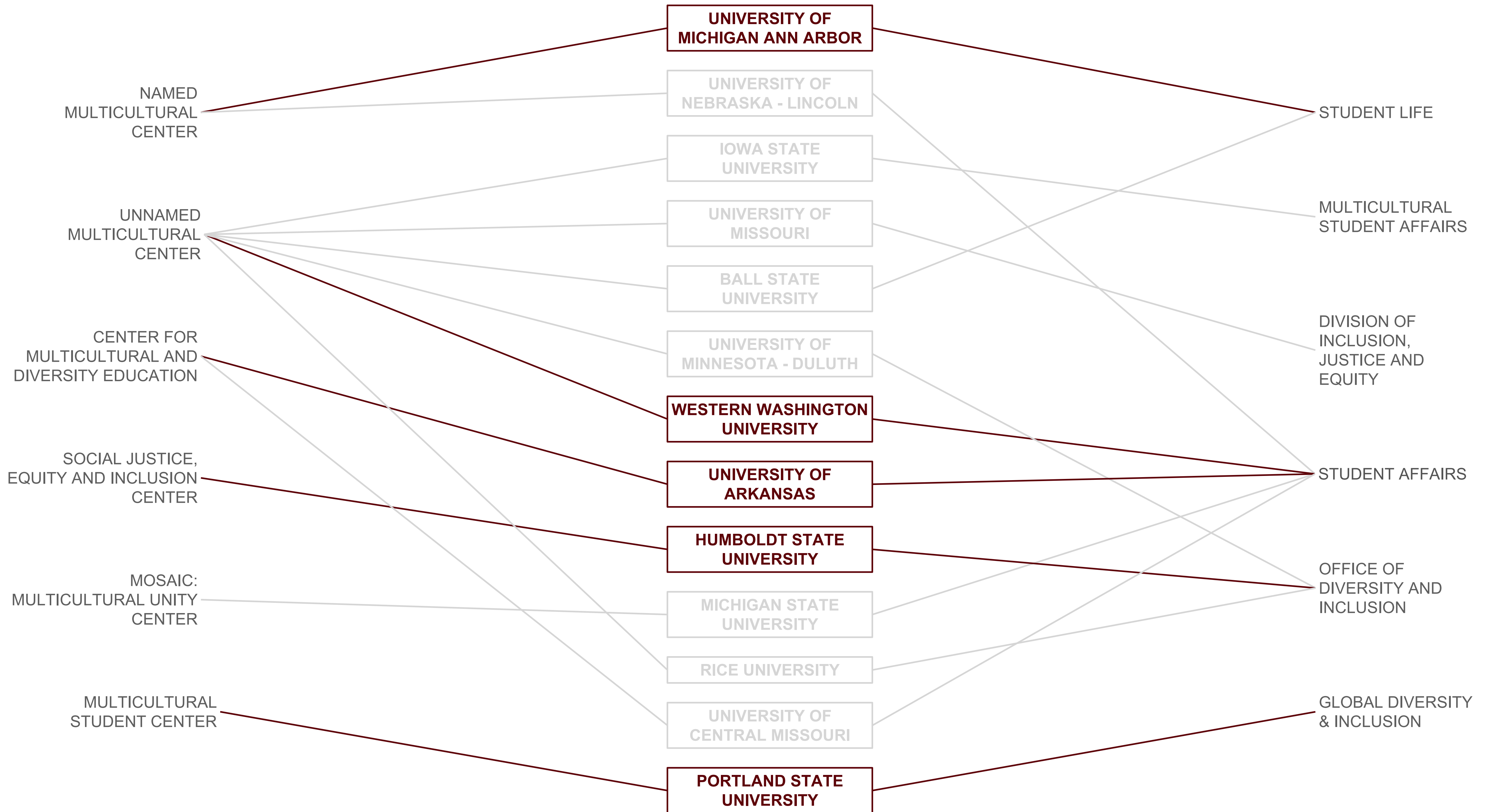
Within Student Unions

Within Student Services/Affairs

Dedicated Buildings

MULTICULTURAL CENTER RESEARCH





WILLIAM MONROE TROTTER MULTICULTURAL CENTER

UNIVERSITY OF MICHIGAN – ANN ARBOR | MICHIGAN

Named after 19-20th century African American civil rights activist and founder and editor of the [Boston] Guardian.

RESOURCES

1. Multipurpose Rooms
2. Quiet Study Rooms
3. Reflection Rooms
4. Kitchen/Café
5. Lounges
6. Meeting Rooms
7. Resources in partnership with campus-wide services (including: Center for Community Service and Learning, Peer Information Counselors, Maize & Blue Cupboard, Counseling and Psychological Services, Health Services, Center for writing)

“Facilitator, convener, and coordinator of intercultural engagement and inclusive leadership education initiatives for University of Michigan students.”



MULTICULTURAL STUDENT CENTER

PORTLAND STATE UNIVERSITY | PORTLAND, OREGON

One of the University's Cultural Resource Centers

- La Casa Latina
- **Multicultural Student Center**
- Native American student & Community center
- Pacific Islander, Asian & Asian American student center
- Pan-Africa commons
- Middle East North Africa south Asia Initiative

RESOURCES

1. Lounge
2. Offices (Diversity Peer Educators)
3. Staff Offices
4. Computer Lab
5. Study Area

*"Our goal is not to agree, but rather, to gain deeper understanding.
Community growth depends on the inclusion of every individual voice"*



MULTICULTURAL CENTER

WESTERN WASHINGTON UNIVERSITY | BELLINGHAM, WA

RESOURCES

- Main: Ethnic Student Center (includes 19 identity-based clubs)
- Student Advocacy and Identity Resource Centers:
 - Veteran's Outreach Center,
 - Womxn's Identity Resource Center,
 - Queer Resource Center,
 - Legal Information Center,
 - Disability Outreach Center,
 - Western Hub of Living Essentials (WHOLE)
- LGTQ+ Western
- Student Outreach Services - Academic Success
- Private reflection/study rooms

Affirm identities, build a sense of community, cultivate leadership



CENTER FOR MULTICULTURAL AND DIVERSITY EDUCATION

UNIVERSITY OF ARKANSAS | FAYETTEVILLE, AR

Components of the Center:

- College Readiness
- Student Success
- Diversity and Inclusion

RESOURCES

1. Reflection room – the Zone
2. Lounge & Multipurpose room

Promote inclusiveness, foster achievement and assist in the development and advancement of a diverse student body.



SOCIAL JUSTICE, EQUITY, AND INCLUSION CENTER

HUMBOLDT STATE UNIVERSITY | ARCATA, CA

One of 4 Cultural Centers for Academic Excellence

African American Center,

Latinx

Social Justice, Equity and Inclusion

Native American Center

RESOURCES

1. Women's Resource Center
2. Rosa Parks Resource Room (Library)
3. Gender-free Restrooms
4. Study Spaces
5. Computer Lab
6. Prayer Room

Explore identity and history

Experience cultures and traditions

Express feelings, ideas and observations

Empower each other to advocate for social justice

Engage to build and sustain community



PROGRAMMING

COMMON PROGRAMMING (SPACES)

- LOUNGE/ COMMUNITY SPACE
- COMPUTER LAB
- MULTIPURPOSE ROOMS
- PRIVATE STUDY ROOMS
- OFFICES
- KITCHEN / KITCHENETTE
- REFLECTION/MEDITATION SPACE
- LIBRARY

UNIQUE PROGRAMMING (SPACES)

- SENSORY-FRIENDLY ROOM
- GENDER-FREE RESTROOMS
- TRANSITION CLOSET
- COUNSELING SERVICES
- MUSIC ROOM
- RACE-SPECIFIC SPACE/ ROOM
- LOCKERS
- VETERAN'S SERVICES
- OUTDOOR GARDEN

QUESTIONS ?????

WHAT IS THE PURPOSE OF THE
CURRENT MULTI-CULTURAL
RESOURCE CENTER?



QUESTIONS ?????

WHAT IS THE PURPOSE OF THE
CURRENT MULTI-CULTURAL
RESOURCE CENTER?

WHAT SHOULD THE PURPOSE BE
FOR THE *NEW* MULTI-CULTURAL
RESOURCE CENTER?



QUESTIONS ?????



WHAT IS THE PURPOSE OF THE *CURRENT* MULTI-CULTURAL RESOURCE CENTER?

WHAT SHOULD THE PURPOSE BE FOR THE *NEW* MULTI-CULTURAL RESOURCE CENTER?

WHAT SHOULD THE **NAME** OF THE NEW SPACE BE?

QUESTIONS ?????



WHAT IS THE PURPOSE OF THE *CURRENT* MULTI-CULTURAL RESOURCE CENTER?

WHAT SHOULD THE PURPOSE BE FOR THE *NEW* MULTI-CULTURAL RESOURCE CENTER?

WHAT SHOULD THE NAME OF THE NEW SPACE BE?

WRITE SOME IDEAS YOU HAVE FOR THE SPACE ON THE POST IT NOTES

ARCHITECTURE IS

ACTIVISM

ANTHROPOLOGY

ART

DESIGN

ECOLOGY

ECONOMICS

EDUCATION

GEOGRAPHY

HISTORY

POLITICS

PSYCHOLOGY

SCIENCE

SOCIOLOGY

TECHNOLOGY

URBANISM

ARCHITECTURE CAN BE **POWERFUL**

THANK YOU!

SEE YOU AT OUR NEXT MEETING!